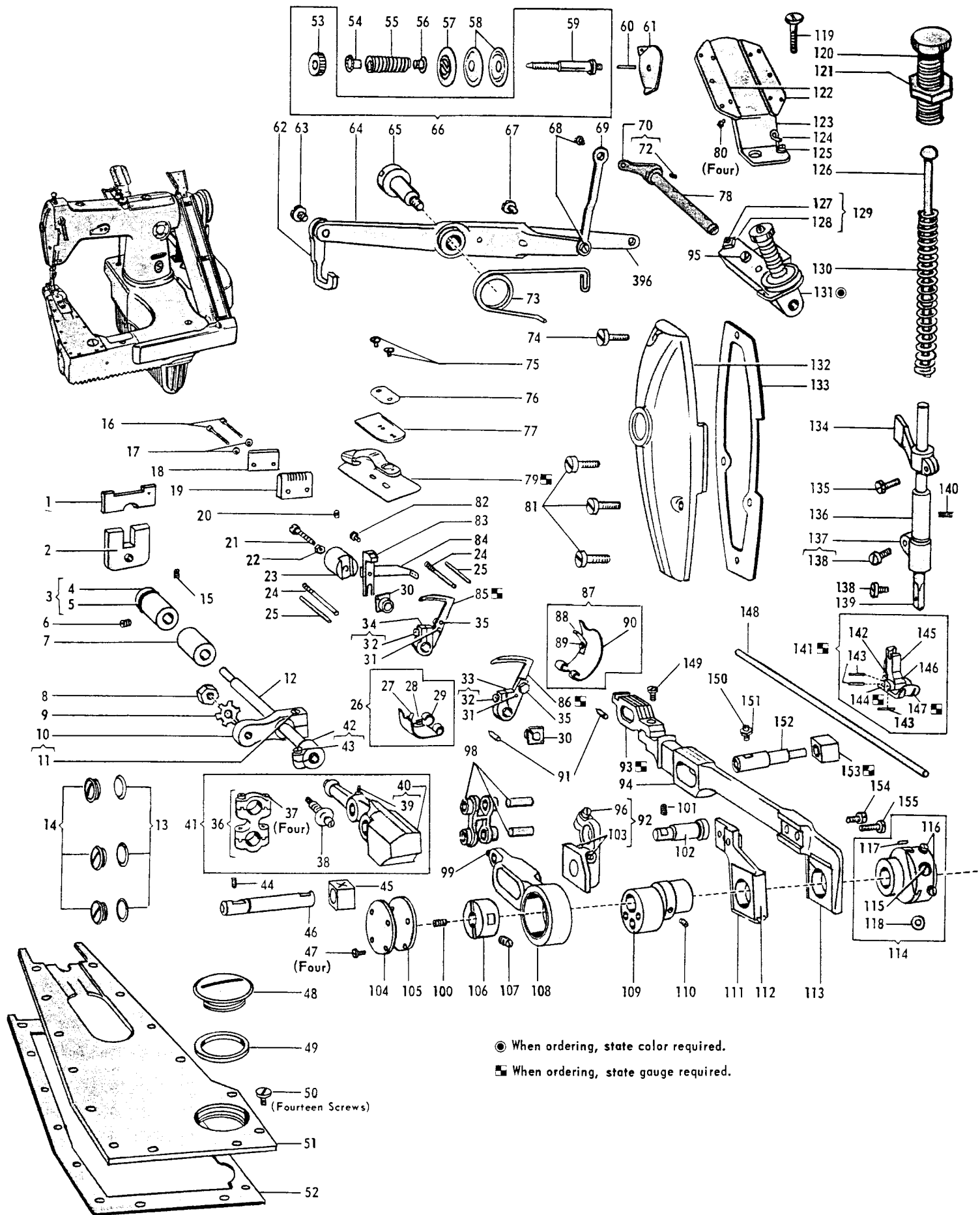


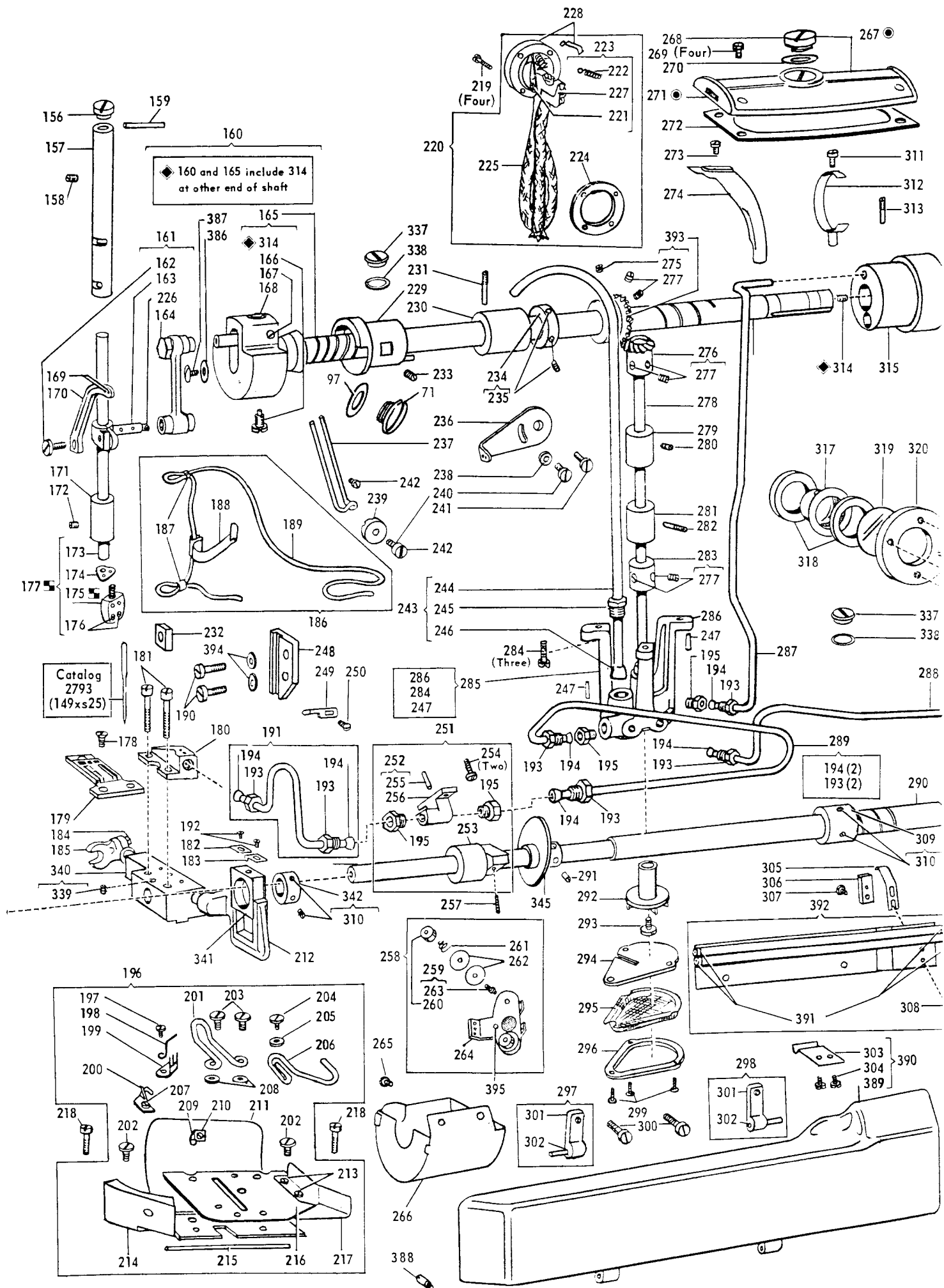
Form 21195
(561)
Printed in U. S. A.

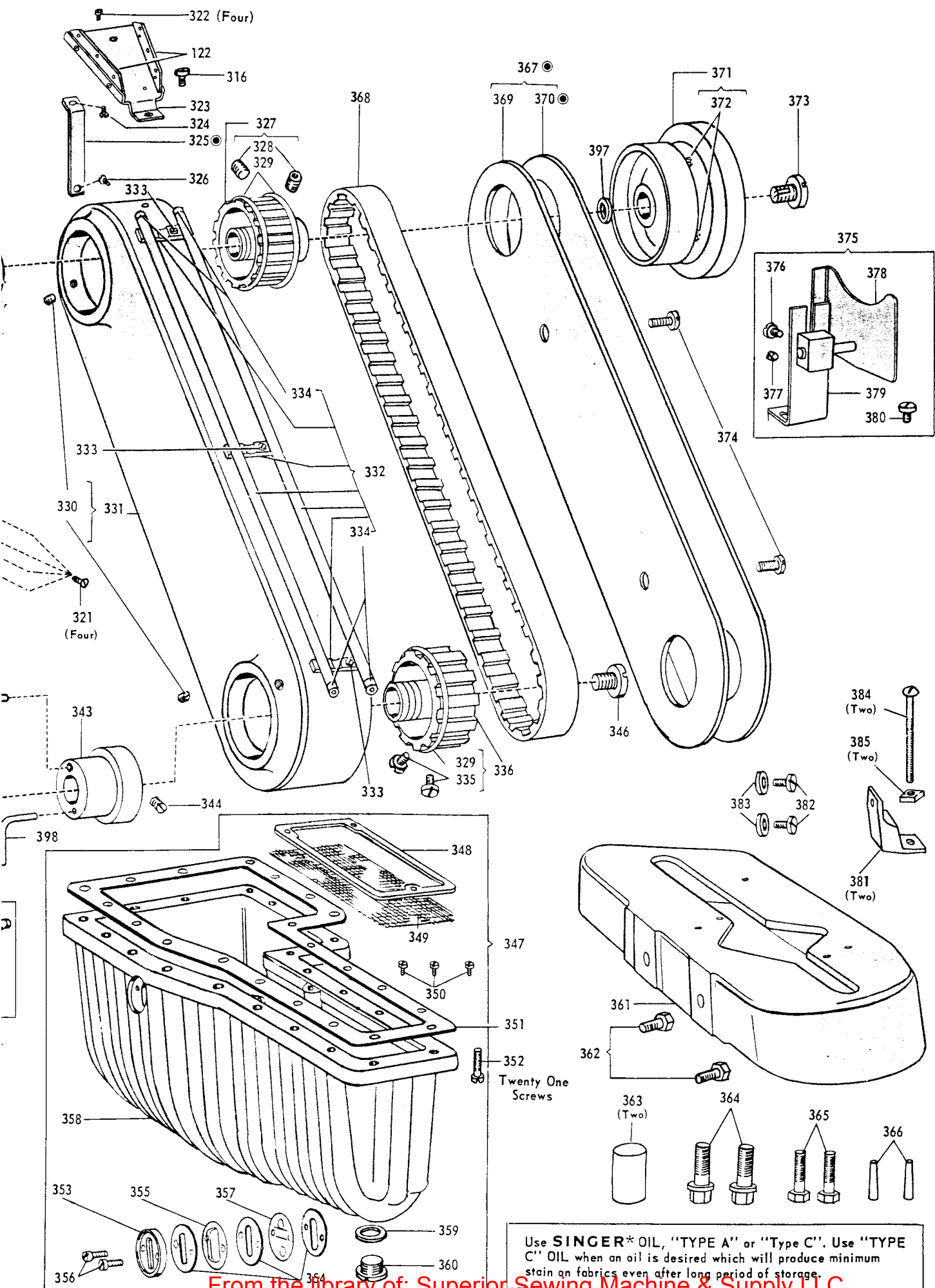
LIST OF PARTS COMPLETE
FOR
NO. 261-1 MACHINE

The Singer Manufacturing Company

From the library of: Superior Sewing Machine & Supply LLC







LIST OF PARTS 261-1

CODE	PART NUMBER	NAME	COMPONENTS	CODE	PART NUMBER	NAME	COMPONENTS
1	143615	Oil Shield (felt) upper		97	147070	Arm Hole Plug Screw Washer	
2	143614	Oil Shield (felt) lower		98	23103	Connecting Link and Hinge Pin	
3	143552	BUSHING (back) COMP.	143485 with 143551	99	1047	Set Screw	
4	143485	Bushing (back)		100	141163	Shaft Screw (left)	
5	143551	Oil Seal (rubber)		101	443	Set Screw	
6	443	Set Screw		102	139534	Hinge Stud	
7	143486	Bushing (front)		103	1253	Set Screw (2)	
8	1520	Stud Nut		104	139030	Bushing Cover	
9	128531	Lock Washer		105	139031	Cover Gasket	
10	139059	CRANK	with 1057	106	143443	Bushing (left)	
11	1057	Pinch Screw		107	140331	Set Screw	
12	143484	Looper Holder Shaft		108	143462	LOOPER ECCENTRIC CONNECTION	with 1047
13	139509	Gasket (3)		109	143461	LOOPER ECCENTRIC AND FEED LIFTING ECCENTRIC	with two 1036
14	139510	Oil Plug (3)		110	1036	Set Screw (2)	
15	454	Set Screw		111	139432	Feed Lifting Eccentric	
16	198	Screw (2)		112	143451	Forked Connection	
17	29043	Washer (2)		113	143450	Slide Block	
18	139181	Thread Cutter		114	143449	FEED ECCENTRIC (adjustable) COMPLETE	with 217, 7071, 50328 and two 51061
19	143524	Thread Guide		115	217	Screw	
20	456	Set Screw		116	51061	Set Screw (2)	
21	1167	Adjusting Screw		117	50328	Feed Regulating Screw	
22	51781	Nut		118	7071	Clamping Washer	
23	139120	Guard Holder		119	376	Bracket Screw	
24	143479	Screw Stud (2)		120	141001	Pressure Regulating Thumb Screw	
25	143480	Position Pin (2)		121	51614	Lock Nut	
26	143465	LOOPER GATE (left)	143464 with 51282 and 143470	122	139158	Needle Thread Guide (2)	
27	143467	LOOPER GATE (left)	143466 with 51282 and 143470	123	139158	Looper Thread Guide (2)	
28	51282	Screw		124	139177	Thread Eyelet	
29	143464	Looper Gate (left) for 2 1/32" Throat Plate		125	207	Screw	
30	143483	Bushing (eccentric) (2)		126	146612	Guide Pin	
31	26276	Position Pin (2)		127	316	Stop Screw	
32	141158	Socket Screw (2)	with 141158, 26276	128	1547	Nut	
33	143482	LOOPER HOLDER (front)	with 141158, 26276	129	15444	STOP SCREW	316 with 1547
34	143481	LOOPER HOLDER (back)		130	143512	Presser Bar Spring	
35	140393	Clamping Screw (2)		131	68002	Tension Bracket	
36	143612	DRIVING ARM CONNECTION	with four 175	132	143447	Face Plate	
37	175	Cap Screw (4)		133	143543	Gasket	
38	139070	Ball Screw Stud		134	146694	LIFTING BRACKET	with 1057
39	1047	Set Screw		135	1057	Pinch screw	
40	139496	DRIVING ARM	with 1047	136	146751	Bushing (lower)	
41	143613	DRIVING ARM 139496	with 139070 and 143612	137	146752	PRESSER BAR STOP	with 190
42	139097	SHAFT COLLAR	with 1454	138	190	Presser Bar Stop Pinch Screw	
43	1454	Pinch Screw		139	190	Presser Foot Screw	
44	446	Set Screw		140	139462	Presser Bar	
45	139074	Slide Block		141	139138	PRESSER FOOT (triple hinged)	with 37160, 139134, 139135, 139137, 146167 and three 26276
46	143463	Stud		142	37160	Spring (small)	
47	202	Screw (4)		143	26276	Hinge Pin (3)	
48	140999	Plug Screw		144	139134	Presser Foot Plate (back)	
49	143435	Screw Gasket		145	139137	Presser Foot Shank	
50	140295	Cover Screw (14)		146	146167	Plate Connection	
51	143433	Bed Cover		147	139135	Presser Foot Plate (front)	
52	143434	Gasket (cork)		148	139281	Thread Tube (side)	
53	51570	Tension Regulating Thumb Nut (2)		149	1255	Feed Dog Screw	
54	59537	Spring Bushing (large) (2)		150	443	Set Screw	
55	131741	Tension Spring (2)		151	1520	Lock Nut	
56	59538	Spring Bushing (small) (2)		152	139516	Hinge Pin (eccentric)	
57	32572	Releasing Disc (2)		153	139046	Slide Block	
58	2102	Tension Disc (4)		154	704	Screw (short)	
59	50328	Tension Screw Stud (2)		155	172	Screw (long)	
60	54988	Releasing Pin (2)		156	140440	Plug Screw	
61	131696	Thread Guide (2)		157	12982	Needle Bar Bushing (upper)	
62	146676	Lifting Bracket Lifter		158	1133	Set Screw	
63	807	Hinge Screw		159	143492	Oil Wick Guide Tube	
64	143510	Lifting Lever		160	143427	ARM ROTARY SHAFT	143426 with 140359, 143236, 143494
65	802	Hinge Screw		161	143494	CONNECTING LINK	with 139533 and 143495
66	59539	TENSION SCREW STUD (2)	50326 with 51570	162	140061	Pinch Screw	
67	161	Extension Screw (2)		163	143495	STUD	with 140061 and 143619
68	110	Hinge Screw (2)		164	139533	Screw Cap	
69	146620	Connecting Link		165	143426	ARM ROTARY SHAFT	with 1036 and 140542
70	54872	CRANK	with 624	166	140542	Position Screw	
71	140610	Arm Hole Plug Screw		167	1036	Set Screw	
72	624	Set Screw		168	140552	Hinge Stud Clamping Screw	
73	143511	Lifting Lever Spring		169	147079	Eyelet Bushing (2)	
74	140090	Screw (upper)		170	143523	Needle Thread Take-up	
75	1443	Screw (2)		171	12977	Needle Bar Bushing (lower)	
76	121449	Clamping Plate		172	1133	Set Screw	
77	139366	Slide		173	143488	Needle Bar	
78	68003	Releasing Shaft		174	143497	Thread Guide	
79	121586	Lap Seam Feller (adjustable)		175	139116	NEEDLE CLAMP	with two 1498
80	229	Screw (4)		176	1498	Needle Set Screw (2)	
81	140061	Screw (lower) (3)		177	143489	NEEDLE BAR	143488 with 139116 and 143497
82	206	Screw		178	691	Throat Plate Screw (3)	
83	143498	Needle Guard (3/32 to 3/16" Gauge)		179	139538	Throat Plate	
84	143541	Needle Guard (7/32 to 3/32" Gauge)		180	143457	Oil Connection	
85	143487	Looper Thread Guide		181	120	Screw (2)	
86	143452	Looper (back)		182	143459	Slide Block Cover (back)	
87	143472	Looper (front)	143471 with 51282 and 143477	183	143460	Slide Block Cover (front)	
88	143474	LOOPER GATE (right)	143473 with 51282 and 143477	184	1324	Pinch Screw	
89	143476	LOOPER GATE (right)	143475 with 51282 and 143477	185	139257	CRANK	with 1324
90	143477	Lock Spring		186	143491	OIL WICK	143490 with 146703 and two 146580
91	51282	Screw		187	146580	Oil Wick Clip (2)	
92	143471	Looper Gate (right) for 2 1/32" Throat Plate		188	146703	Oil Wick Clamp and Retainer	
93	143473	Looper Gate (right) for 3/4" Throat Plate		189	143490	Oil Wick	
94	143475	Looper Gate (right) for 7/8" Throat Plate		190	1485	Screw (2)	
95	143478	Hinge Pin (2)		191	143500	OIL PIPE	with two each 143124 and 143125
96	139535	COLLAR AND SUPPORT	with 51369 and two 1253	192	226	Screw (2)	
97	139537	Feed Dog		193	143125	Sleeve Nut (6)	
98	143448	Feed Bar		194	143124	Sleeve (6)	
99	225	Plug Screw		195	143126	Sleeve Adaptor (5)	
100	51369	Pinch Screw					

■ State gauge required
● State color required